

General Product Description

Radiant P1515 POS Terminal



The Radiant P1515 Point-of-Sale is the newest member in the Radiant Systems family of open retail platforms. The terminal utilizes Intel's **ATOM** processor, 945GSE chipset. The highly efficient ATOM processor offers great performance, but with lower power consumption for a more reliable design.

Open Platform Highlights

- Standard Intel Architecture
- Industry standard storage (uSSD), DDR2 memory, and USB/RS232 connectivity
- Multiple operating systems including Windows Embedded Standard and Windows Embedded POS Ready
- OPOS drivers available

The countertop enclosure provides many benefits, including a small footprint and multiple mounting options. The **cable management system** provides for ease of installation, controlled access to connectors, and concealed cable routing for better reliability. This all-in-one solution provides very tight integration of core point-of-sale hardware including a touch screen, magnetic stripe reader, and much more.



This package includes a 15" active matrix, color, 1024X768 main display with a resistive touch screen. The 15" display is a *56% increase* in surface area over the 12" models which allows for faster transactions due to less toggling between application screens, more application design flexibility, and better resolution. The bright active matrix screen provides the best possible display quality, with excellent contrast and brightness.

The P1515 resistive touch screen provides a very durable, accurate, and fast touch interface even with a gloved hand or stylus.

The P1515 offers several connectivity options including two RJ12, two DB9, four USB, and one dedicated cash drawer port. This provides expansion capabilities if new devices/peripherals need to be supported without having to buy an add-on expander. Also, the powered serial ports eliminate the need for power bricks, thereby reducing another point of potential failure.

The **retail hardened design** offers a spill resistant, high impact enclosure that is built to withstand tough in-store conditions with continuous operation. The fanless configuration increases reliability by preventing forced air through the unit, thereby reducing contaminants in the system.

The P1515 supports **multiple operating systems** including Windows Embedded Standard and Windows Embedded POS Ready. The P1515 provides full support for TCP/IP networking on a 10/100/1000 BaseT Ethernet network.

Product Stability

By using Intel's embedded processor family, the P1515 offers **guaranteed product stability** for many years unlike traditional consumer desktop and mobile PCs that have short processor life spans of only a

This document is intended only for internal use by Radiant employees, and may contain information which is privileged, confidential and exempt from disclosure under applicable law. If the reader of this document is not a Radiant employee, you are hereby notified that any dissemination, distribution or copying of this communication is strictly prohibited.

few months. This benefit provides a consistent configuration which is critical for rollouts that might last several years.

Model P1515 Every-Unit-Item Features and Benefits

Features	Benefits
Intel Atom N270 (1.6Ghz)	Fast performance, very low power, and support for multiple operating systems. Long lifecycle commitment from Intel.
Intel 945GSE Chipset	Fast, high-bandwidth 533mhz front-side bus. Supports dual, independent video displays, USB 2.0, and up to 2 GB of 400/533 MHz DDR2 system memory. Intel® DVMT 3.0 supports up to 224 MB shared video memory.
Radiant countertop enclosure	Fully integrated, low-profile, water and tamper resistant housing for high functional retail interaction
CableStrap™ System	Cable management system that uses a cable strap to secure cable connections for better reliability
Dual-Bulb, Active Matrix, XGA LCD primary display	Excellent brightness, contrast, and color depth. Enables the proper display of high-quality graphics to ease use and decrease training time for retail employees or to directly engage the consumer
Software-adjustable brightness and contrast control for main display	Better display characteristics for user as well as significantly increased bulb life for main display
Integrated resistive touch screen controller	Resistive screen offers low-cost option with superb ease of use. Can be used with instruments other than fingertip, very high durability, does not “drift” over time.
Magnetic Stripe Reader (MSR)	Integrated 2-Track MSR for credit and loyalty cards. 3-Track encrypted MSR optional.
Flash Storage options	solid-state disk drive.
System Management features	Supports ACPI, SMBIOS, DMI, SNMP, WfM, and PXE. Also supports metering, remote desktop, remote execution, BIOS update, system inventory and asset management.
4 serial ports (2 RJ12 powered and 2 DB9 non-powered)	Provides data I/O with any RS-232 peripheral and power, minimizing failure points
4 USB 2.0 ports	Provides data I/O with any USB peripheral. Fast data rates with USB 2.0 at 480 Mbps
1 Dedicated Cash Drawer Ports (RJ9 12v)	Provides port for direct drive cash drawers (12 volt)
1 DVI port	Provides port for second display (digital or analog)

Variable Position Tilt-Stand with power supply

This tilt-stand provides variable tilt positions that are secured without need for pins or locking knobs. The dual-spring hinge allows for continuous, smooth rotation throughout the tilt angle (20° to 100° from vertical). The stand includes a cable management system to prevent accidental disconnect or tampering. It also offers through-counter cable routing, which hides all cabling from view. With the power supply located in the base, thermal dissipation of the power supply is isolated and away from the touch head motherboard electronics, which increases reliability of the terminal. The power supply is also field serviceable.

Model P1515 Optional Features

Operating System Options

See configuration options

Microsoft Windows Embedded Standard Operating System

Microsoft Windows Embedded POS Ready Operating System

Storage

See configuration options

Solid State Drive - Solid state storage option with Windows Embedded Standard OS for greater reliability and increased data speed. 2GB capacity is standard

Speakers

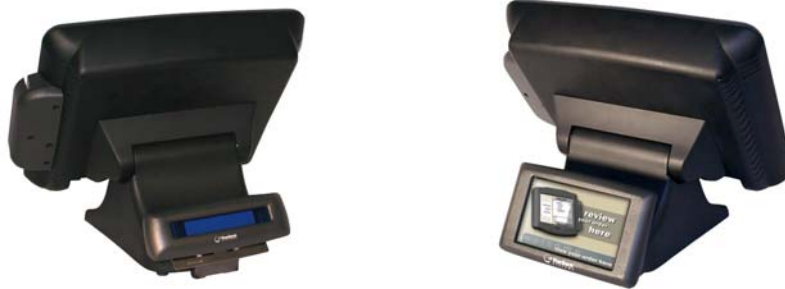
See configuration options

The P1515 ships as standard with a piezo buzzer for beeps. This option provides high-quality feedback for user interaction by adding stereo speakers mounted internally.

Radiant Customer Display Options

See configuration options

Two features are available depending on the requirement of a 2x20 or C700 Display.



Radiant offers two options for the customer display including the color 7" widescreen (C700) that supports full motion video or the 2x20 VFD Graphical Customer display. Both provide the ability for customers to view orders as they are entered into the point of sale resulting in increased order accuracy. Additionally, they can be used as an advertising medium, allowing clients to display specials and promotions to the customer at the time of purchase. Either display can be tilt stand mounted directly on the terminal or pole mounted. The Radiant terminal provides the necessary power to operate the C700 or the 2x20 VFD Customer Display. For customer display feature numbers and specifications, see specific General Product Descriptions for displays.

Wall Mount Kit

Feature Number: See configuration options

The P1515 can be factory ordered as a wall mount configuration which includes the terminal mount bracket and power supply attached to the touch head. Please refer to specific P1515 model numbers to order a wall mount configuration.

Typical RJ12 to DB9M adapter kit (should work for pinpads, scanners, etc)

To connect a peripheral device that requires DB9 to a Radiant P15xx POS terminal via serial cable, order the following the two items below.

- 1CBDB9RJ** DB9M to RJ12 Adaptor
- CB10548** 6 ft RJ11 cable

Countertop Mount Kit (Tilt base)

Feature Number: TBD

This kit includes the countertop mount bracket for the base to mount to the countertop.

Tamperproof Bottom Cover

Feature Number: P150F301

This metal cover/door makes the port connectivity panel on the bottom of the terminal tamperproof and secure. It is mounted using one screw and still allows limited access to the on/off button.



Specifications

CPU	Intel Atom N270 (1.6Ghz)
Volatile Memory	1GB Standard, 1 SODIMM slots with up to 2GB DDR2 supported
Networking	Auto-selecting 10/100/1000 Base-T Ethernet using TCP/IP
Primary Display	15" XGA, Active Matrix, dual-bulb, 40K hours, supports auto-stretching VGA and SVGA resolutions
Touch Screen	Native support for 5-wire resistive
Storage	2GB uSSD Flash
MPEG Video Decoding	Software MPEG decoding supported
Enclosure	Polycarbonate/ABS impact resistant, high strength blend, environmentally sealed
Dimensions (Countertop envelope through tilt angle)	11.12 to 13.48" L x 15.7 or 16.98" W x 11.1 to 13.6" H, 28.2 to 34.2 cm L x 39.9 or 43.1 cm W x 28.2 to 34.5 cm H
Base Dimension	9.3" L x 9.5" W 23.6 cm L x 24.1 cm W
Tilt Angle	20° to 100° from vertical
Weight	15.47 lbs., 7.01 kg
Operating Temperature	32°F – 104°F, 0°C – 40°C
Storage Temperature	32°F – 158°F, 0°C – 70°C (must be in controlled environment)
Humidity	5% to 85%, non-condensing
Environmental Compliance	RoHS, WEEE
EMI Certifications	FCC Class A, CE, C-Tick

Safety Certifications	UL, CUL, CB Scheme
-----------------------	--------------------

Installation Notes

Cable Restraint: The P1515 includes a cable management system with cable strap to prevent accidental disconnects and tampering. The strap is opened, peripheral connections are made, the strap is closed, and then cables are then routed through the slot in the base.

Footprint: An area of no less than 16.8” inches square is necessary to properly install a P1515 unit with MSR. This will accommodate the unit as well as its associated mounting hardware and customer display.

Power: P1515 has an auto-sensing power supply rated for 110V and 240V, 50Hz or 60Hz located in the base. Source power is drawn from a regular AC wall outlet. The electronics are “universal” – that is, they will function when connected to standard wall outlets of most nationalities around the world. For use in locales other than North America, special wall outlet adapters or cables will be required. For international configurations of the P1515, typically the country specific power cord is ordered separately.

Moisture: The P1515 units should not be installed in areas where they might be exposed to direct water spray. P1515 units are not meant for outdoor installation.

Touch Screen Cleaning: Any standard glass cleaner that is not ammonia based or water can be used to clean the touchscreen. Always spray the glass cleaner on the cloth or towel and then clean the touchscreen to prevent cleaner from running down the glass and gathering on the front bezel.

Magnetic Strip Reader (MSR) Cleaning: Periodically, the MSR may need to be cleaned depending on usage. Pre-saturated MSR cleaning cards can be ordered from Radiant (50/box) using part number ZZ00299. Otherwise, wrap a card with a saturated paper towel of glass cleaner and swipe gently to clean reader head.